

Smit Mammografi / hospital trailer, Ausstellungs auflieger



Poulsen Trucks & Trailers ApS
Vrøndingvej 8A
8700 Horsens

Sælgere
Philip K. Bredahl
philip@poulsentrucks.com
+45 74 67 11 12
+45 28 90 01 31

Magnus K Jensen
magnus@poulsentrucks.com
+45 28 70 40 03

Basis	
Type	Auflieger
Aksel	1
Stand	Gut
Fahrgestell	
Gesamt achsaggregat	10.000kg
Achsen	BPW
Luftfederung	✓
Königzapfen drück	10.000kg

Registrierung	
Jahr	1993
Reg. datum	23-11-1993
Reg. nr.	EF9933
Letzte MFK	10-04-2024
FIN	930803
Ref. nr.	5065

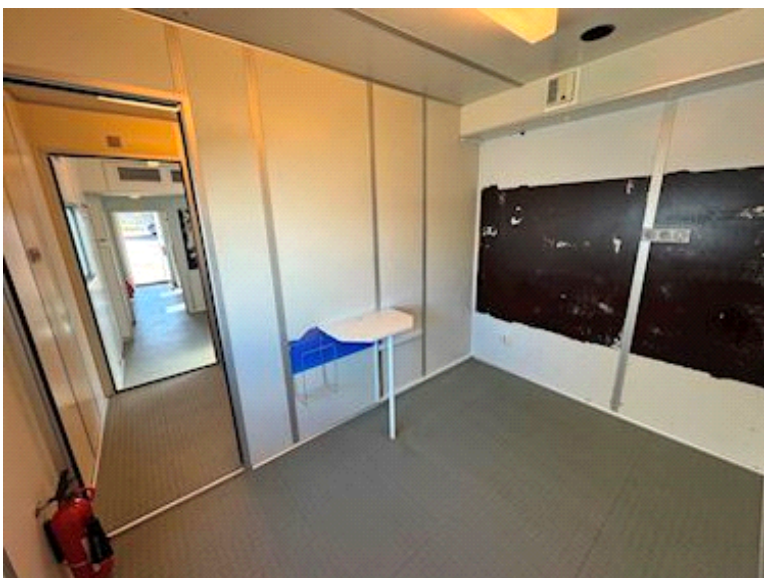
Bremsen	
Trommelbremse	✓
Bereifung	
Grösse	265/70 R19,5"
Reifenzustand achse 1 L-R%	90/90-90/90
Gesamtgewicht	
zul. Gesamtgewicht	20.000kg

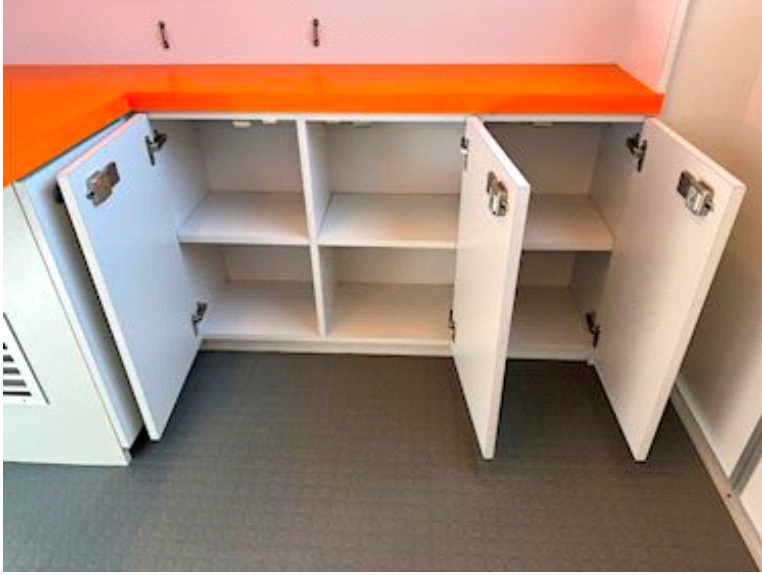


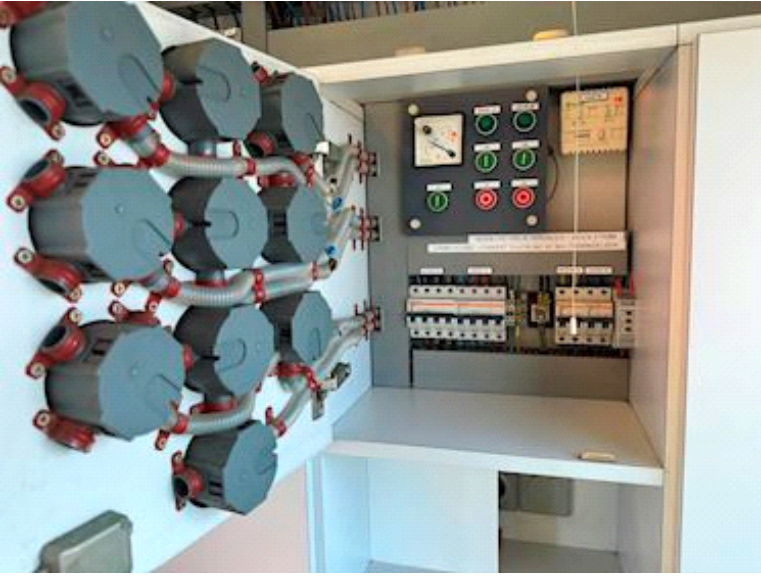
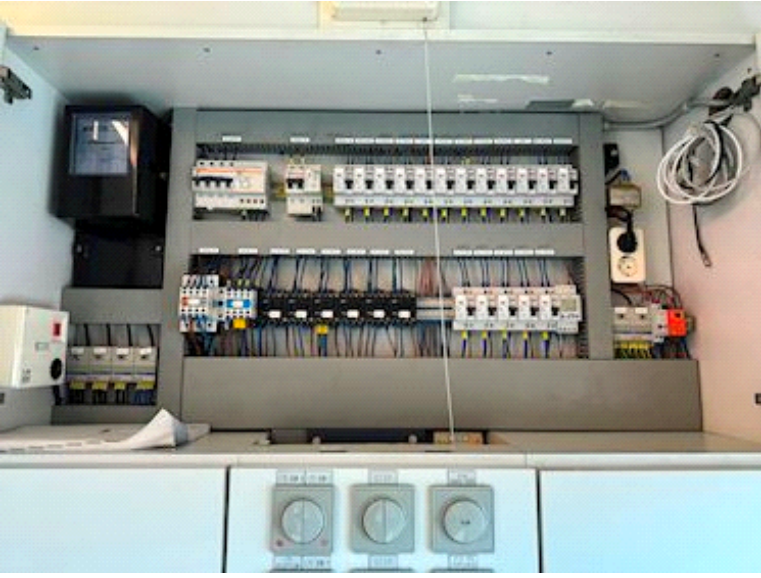


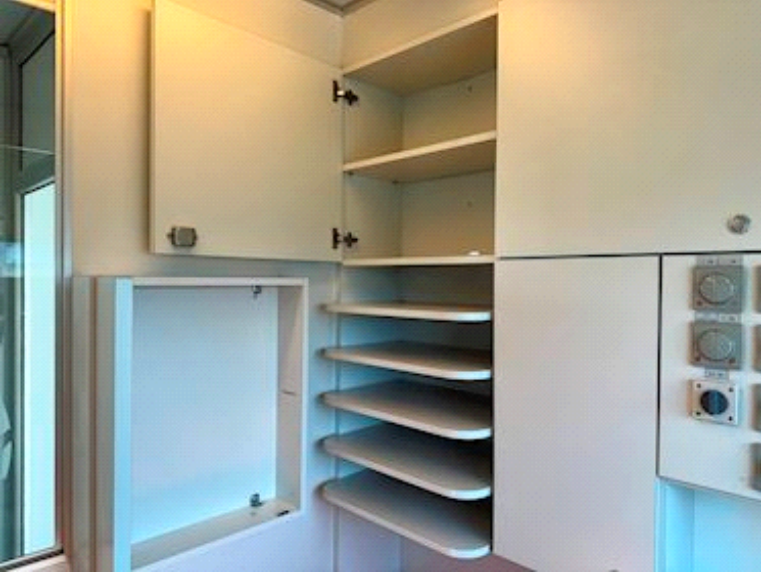
















SMIT
MOBILE EQUIPMENT B.V.

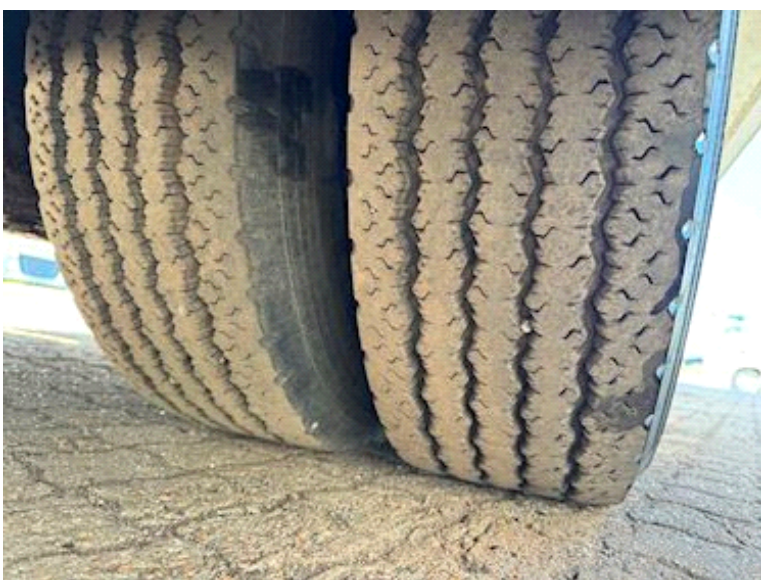
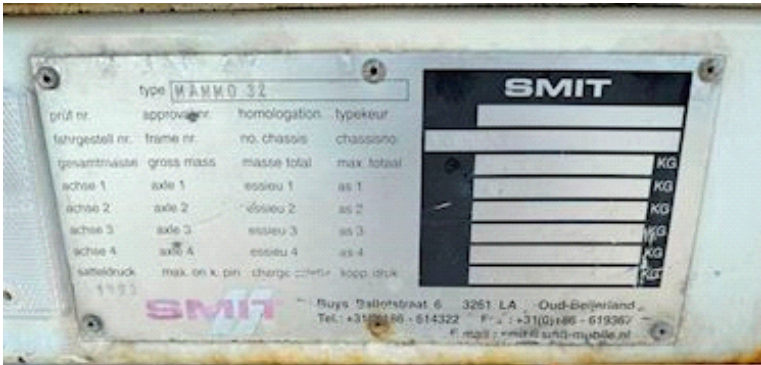
oud-beijerland holland
telephone: 01860 - 14322
telefax: 01860 - 19367 telex: 25663

Type	Type	Type	Type
Bevat	Plaats of constructie	Arrest of land	Plaats
Model	Serial number	Number of units	Construction

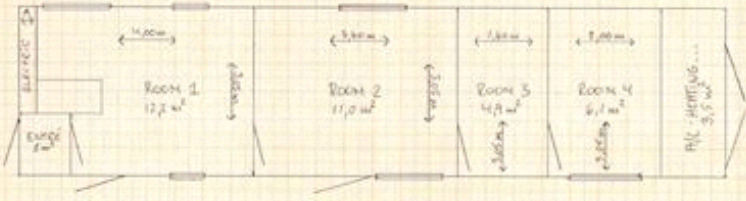
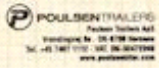
02-01-82

1982

01860-14322



SMIT 930803



ENTREE = L 0,80m x W 1,0m
A = 0,30m
A/C-HEATING = L 1,15m x W 3,05m

Internal height
ROOM 1 + ROOM 2 = 2,65m
ROOM 3 + ROOM 4 = 2,30m