

Smit Mammografi / hospital trailer, Exhibition Trailer



Poulsen Biler ApS
Vrøndingvej 8A
8700 Horsens

Sælgere
Philip K. Bredahl
philip@poulsentrucks.com
+45 74 67 11 12
+45 28 90 01 31

Magnus K Jensen
magnus@poulsentrucks.com
+45 28 70 40 03

Basis	
Type	Trailers
Aksel	1
Stand	Fine
Chassis	
Total axle load	10.000kg
Axle type	BPW
Airsuspension	✓
Kingpin pressure	10.000kg

Registration	
Year	1993
Reg. date	23-11-1993
Reg. no.	EF9933
Last inspection	10-04-2024
VIN	930803
Ref. no.	5065

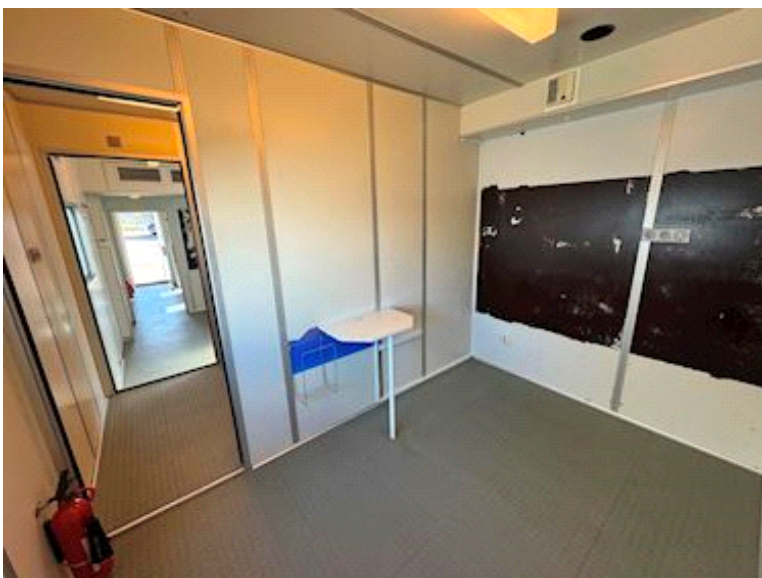
Brakes	
Drum brakes	✓
Tyres	
Dimensions	265/70 R19,5"
1st axle tyres L-R%	90/90-90/90
Weight	
Total weight	20.000kg

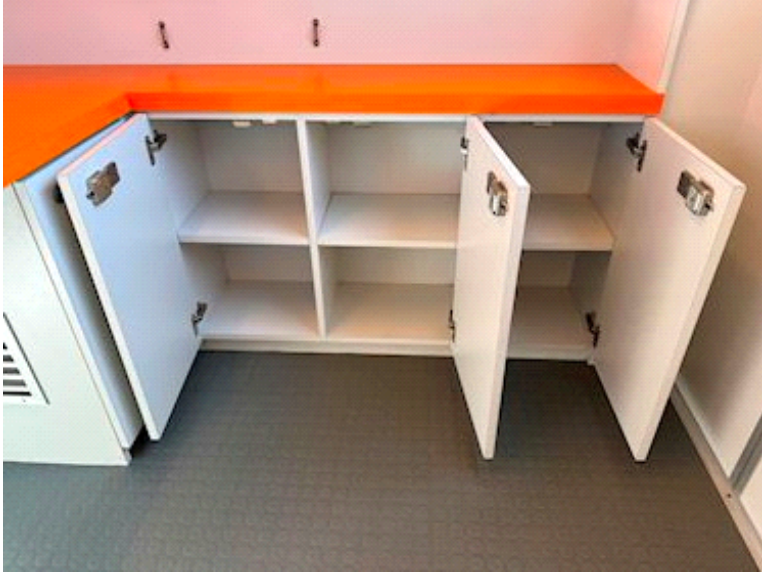


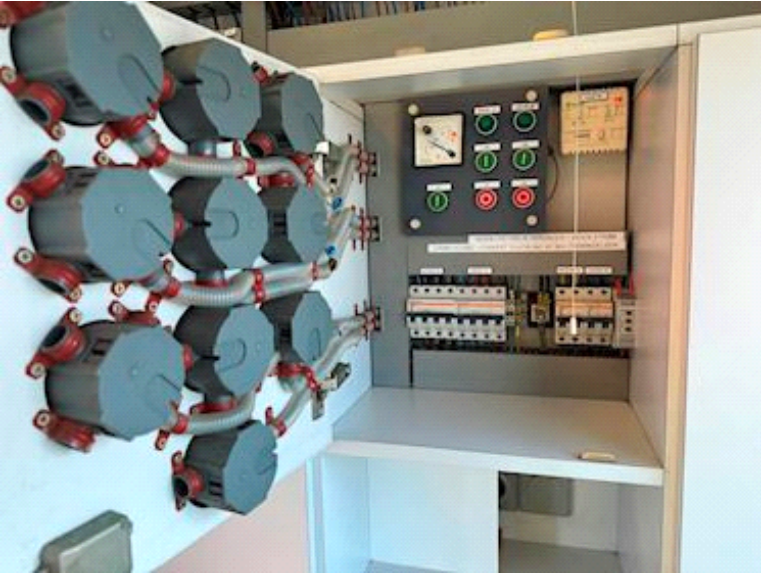
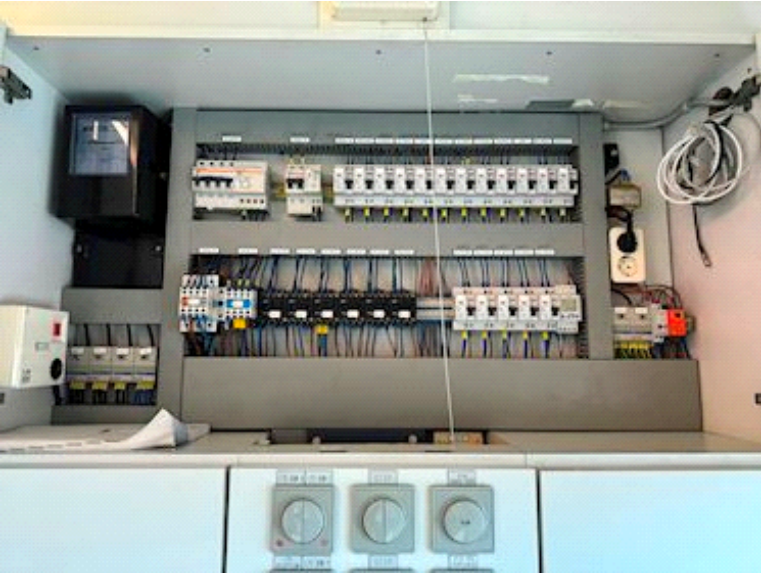


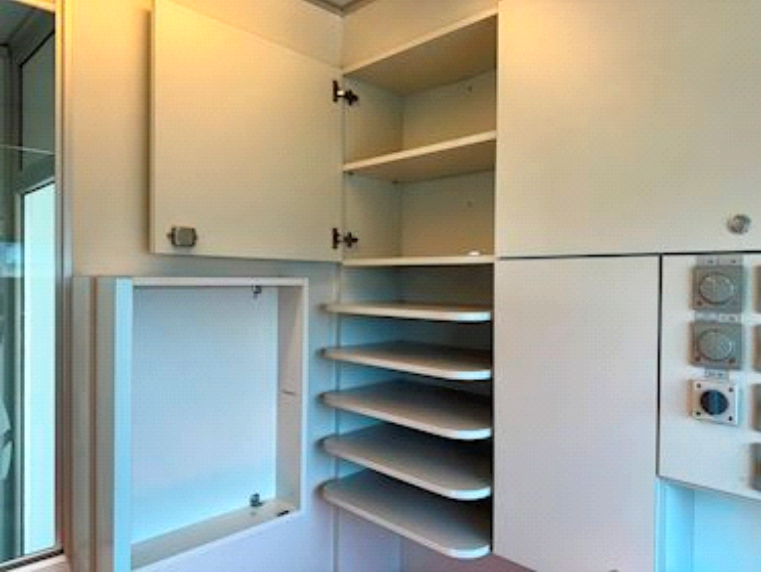






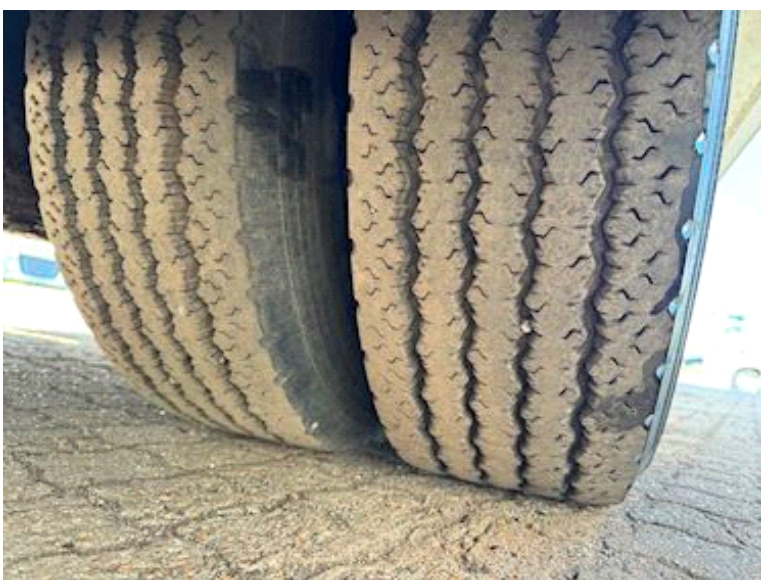
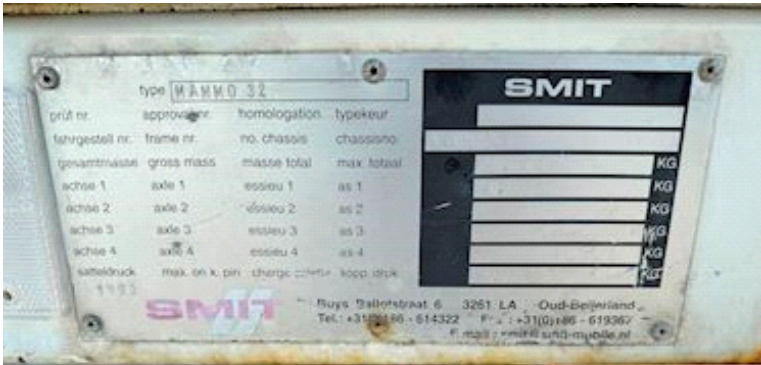




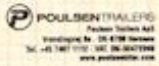








SMIT 930803



POULSEN TRAILERS

Philip A. Poulsen
Tel. +31 591 717 100
Fax +31 591 717 101
www.poulsontrailer.com



ENTREE = L 0,80 m x W 1,0 m
A = 0,30 m
A/C-HEATING = L 1,15 m x W 3,05 m

Internal height
ROOM 1 + ROOM 2 = 2,65 m
ROOM 3 + ROOM 4 = 2,30 m