

# Mercedes-Benz Antos 2533 L, Closed box



Poulsen Biler ApS  
Haarup skovvej 7, Haarup  
8600 Silkeborg

Sælger  
Poulsen Trucks & Trailers ApS  
Mail@poulsentrucks.com  
+45 74 67 11 12  
+45 74 67 11 12

Basis		Engine and transmission		Brakes	
Type	Truck	HP	330	Disk brake	✓
Aksel	6x2*4	KM	533.000	ABS	✓
Stand	Very fine	Gear box	AUT	Engine brake	✓
Registration		EURO type	6	Chassis	
Year	2017	number of tank	1	Wheelbase	6.100mm
Reg. date	12-09-2017	Litre of tank	500	Axel pressure, front	8.000kg
Last inspection	26-11-2024	Adblue tank liter	80	Axel pressure, back	11.500+7.500kg
VIN	WDB96302010176788	Weight		Tyres	
Ref. no.	7602	Loading capacity	13.325kg	1st axle tyres L-R%	10-10
Suspension		Total weight	26.000kg	2nd axle tyres L-R%	10-10
Front, air	✓	Empty weight	12.675kg	3rd axle tyres L-R%	40-40
back, air	✓	Cab		1st Axle Tyres size	385/65R22,5
		Aircondition	✓	2nd Axle Tyre Size	315/70R22,5
		Automatic emergency brake	✓	3rd Axle Tyre Size	315/70R22,5
		Lane Assist	✓		
		Radio	✓		
		Multifunction steering wheel	✓		
		Inverter 24V-220V	✓		

## Beskrivelse

Mercedes-Benz Antos 2533 L 6x2\*4 - year 2017

Schmitz 24 pallets alu. box model MKO no 9009413 internal dimensions: L 9800 x W 2460 x H 2290 mm - bed base height 1250 mm - external total height 3670 mm - aluminum profile bottom - top flap - light in box - 1 row of lashing rail

2500kg BÄR lift with radio control - 2000 mm aluminum lift plate

Classic Space 2.3 cab with Safty package - air conditioning - roof spoiler - Cruise control - Lane assist +

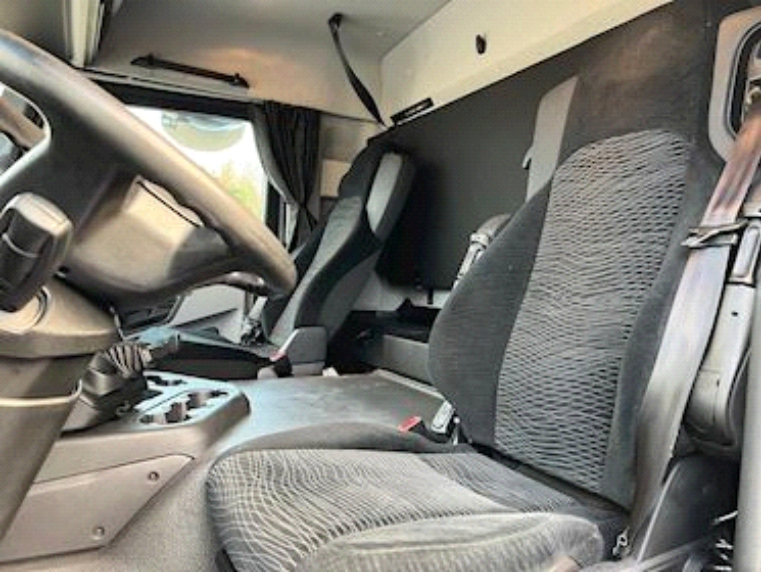
Catastrophe brake - Powershift Aut. gear shift - Air suspension front + rear - hydraulic steering + liftable bogie which makes the truck more manoeuvrable

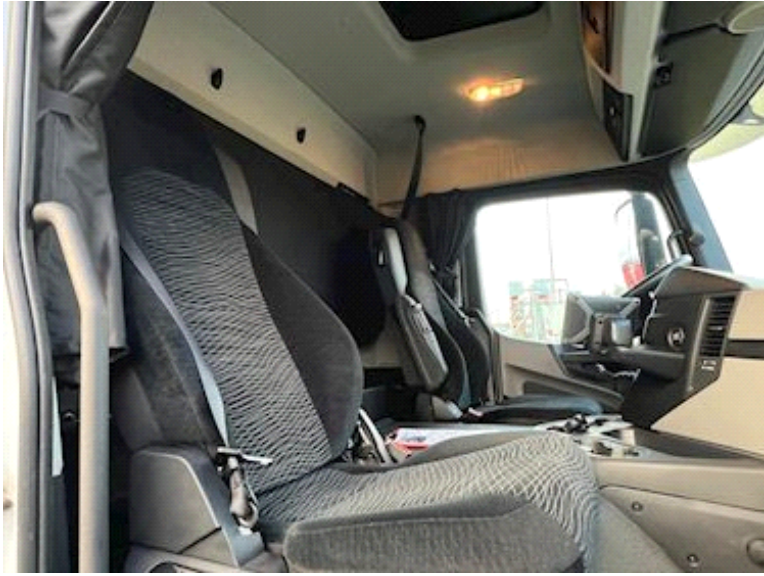
Well maintained 1 owner company car - can be delivered with or without preparation

If interested, contact us on +45 8724 4370 / salg@scanvo.dk or see our selection of distribution vehicles at [www.scanvo.dk](http://www.scanvo.dk)







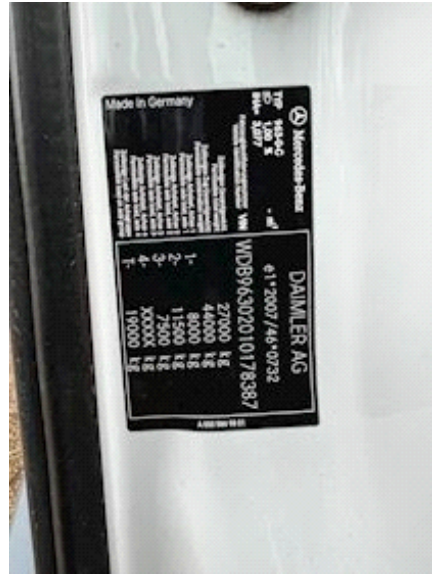














**SCHMITZ  
CAROBULL**



Aufbau-Nr.

9009415

Baujahr

08/2017

Eigengewicht

12570

kg

zul. Ges. Gew.

28000

kg

Prüf-Nr.

Typ

MKO

