

MAN TGS 26-440 6x2-4 LL, Container frame/Container



Poulsen Biler ApS
Haarup skovvej 7, Haarup
8600 Silkeborg

Sælger
Poulsen Trucks & Trailers ApS
Mail@poulsentrucks.com
+45 74 67 11 12
+45 74 67 11 12

Basis		Engine and transmission		Tyres	
Type	Truck	HP	440	1st axle tyres L-R%	70-70
Aksel	6x2*4	KM	325.000	2nd axle tyres L-R%	90-90
Stand	Very fine	Gear box	AS-Tronic (Aut. shift)	3rd axle tyres L-R%	20-70
Registration		EURO type	6	1st Axle Tyres size	315/70R22,5
Year	2014	number of tank	1	2nd Axle Tyre Size	315/70R22,5
Reg. date	04-12-2014	Litre of tank	600	3rd Axle Tyre Size	315/70R22,5
Reg. no.	DA58981	Adblue tank liter	80	Cab	
Last inspection	03-10-2023	Ad-blue	✓	Cabtype	LX
VIN	WMA21SZZ9FP059876	Weight		number of sleeper berths	1
Ref. no.	7603	Loading capacity	15.750	Navigation	✓
Suspension		Total weight	26.000	Air conditioning	✓
Front, air	✓	Empty weight	10.250	Multifunction steering wheel	✓
back, air	✓	Brakes			
Chassis		Disk brake	✓		
Wheelbase	4.800mm	ABS	✓		
Axel pressure, front	8.000kg				
Axel pressure, back	19.000 (11.500+7.500)kg				
Backaxel, single interchange	✓				
toolbox	✓				

Beskrivelse

MAN TGS 26-440 6x2-4 LL - Euro 6 - year 2014

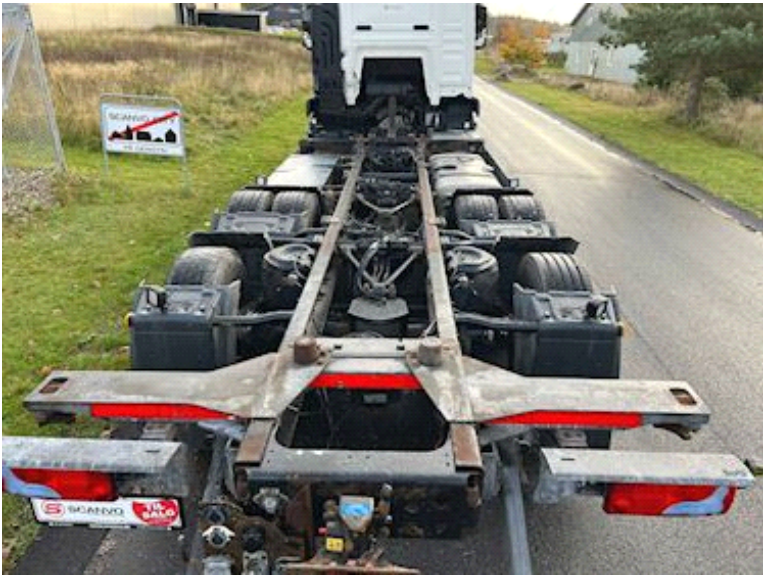
Built with:

7450 mm exchangeable frame - Driving height approx. 980 mm - 38 mm Ringfeder towbar - Rotatable boogie - Sleeping cabin w/1 berth - Air conditioning - Lighthouse - Navigation - 4800 mm wheelbase mm.

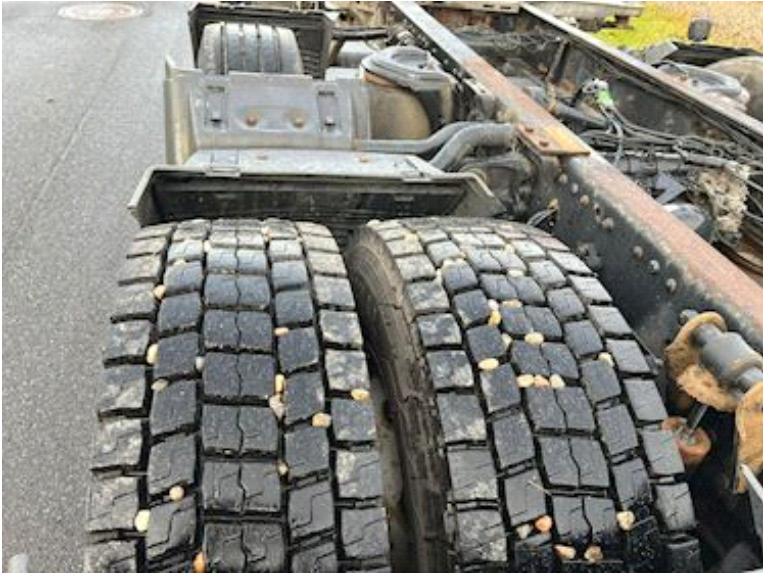
If interested, contact us on +45 8724 4370 / salg@scanvo.dk or see our selection at www.scanvo.dk













MAN Truck & Bus AG
e4*2007/46*0231
WMA21SZZ9FP059876
(DK)

	28000 kg	28000 kg
	60000 kg	60000 kg
1	60000 kg	60000 kg
2	11500 kg	11500 kg
3	7500 kg	7500 kg
4	kg	kg
5	kg	kg
T1	kg	8000 kg
T2	kg	19000 kg
T3	kg	kg

MAN
2-S6481
0,6 m TGS 26,440 612-4 LL
1,5 x 21 (29-22)

E4
E4
E4
E4

MAN









